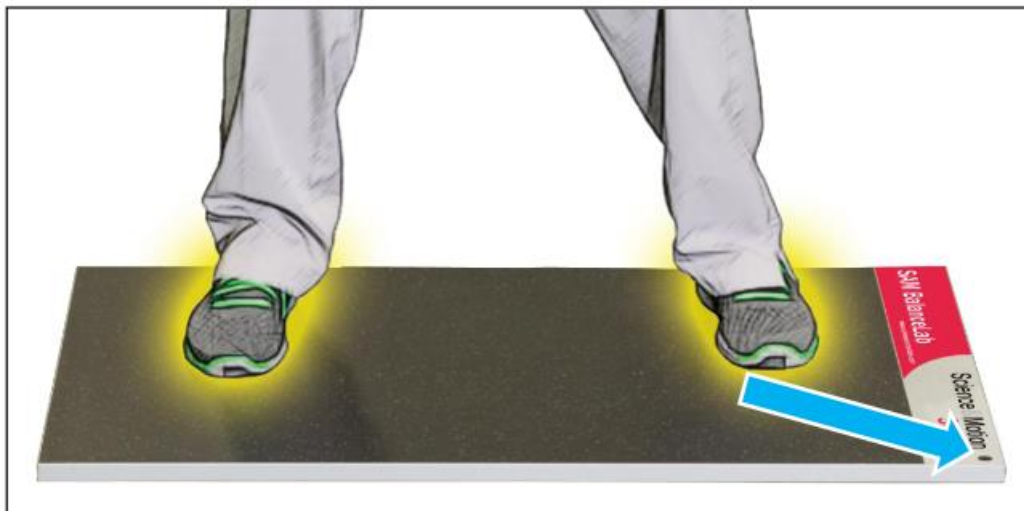


SAM BalanceLab – LED status

Description of the different states of the system signaled by the LED light.

The LED status light is on the top right side of the plate:



LED signal	State
Off	BalanceLab might be connected by USB but power source is off or defect. In this case the system is visible in the Windows Device Manager as "Zebris FDM"
Green blinking	Power source connected and OK. But no active USB connection. USB not connected or Computer off?
Green solid	Power and USB ok. System ready for use.
Orange solid	In recording mode, recording is running.